

Atlas Copco Surface drill rigs

PowerROC T25, T30 & T35



Straightforward design, ground breaking performance

Hole Diameter: PowerROC T25 51–89mm (2"– 3½")
 PowerROC T30 64–89mm (2½"– 3½")
 PowerROC T35 64–115mm (2½"– 4½")

Sustainable Productivity

Atlas Copco

COP 1240, 1640 or 1840 rock drill, with the hydraulic based COP Logic control system, performs well in any conditions

Hydraulic cylinder feed system employs rigid aluminium feed beam with precise feed force, for longer drill steel life

Cabin is **ROPS- and FOPS-** approved, and is equipped with hydraulic pilot control joysticks



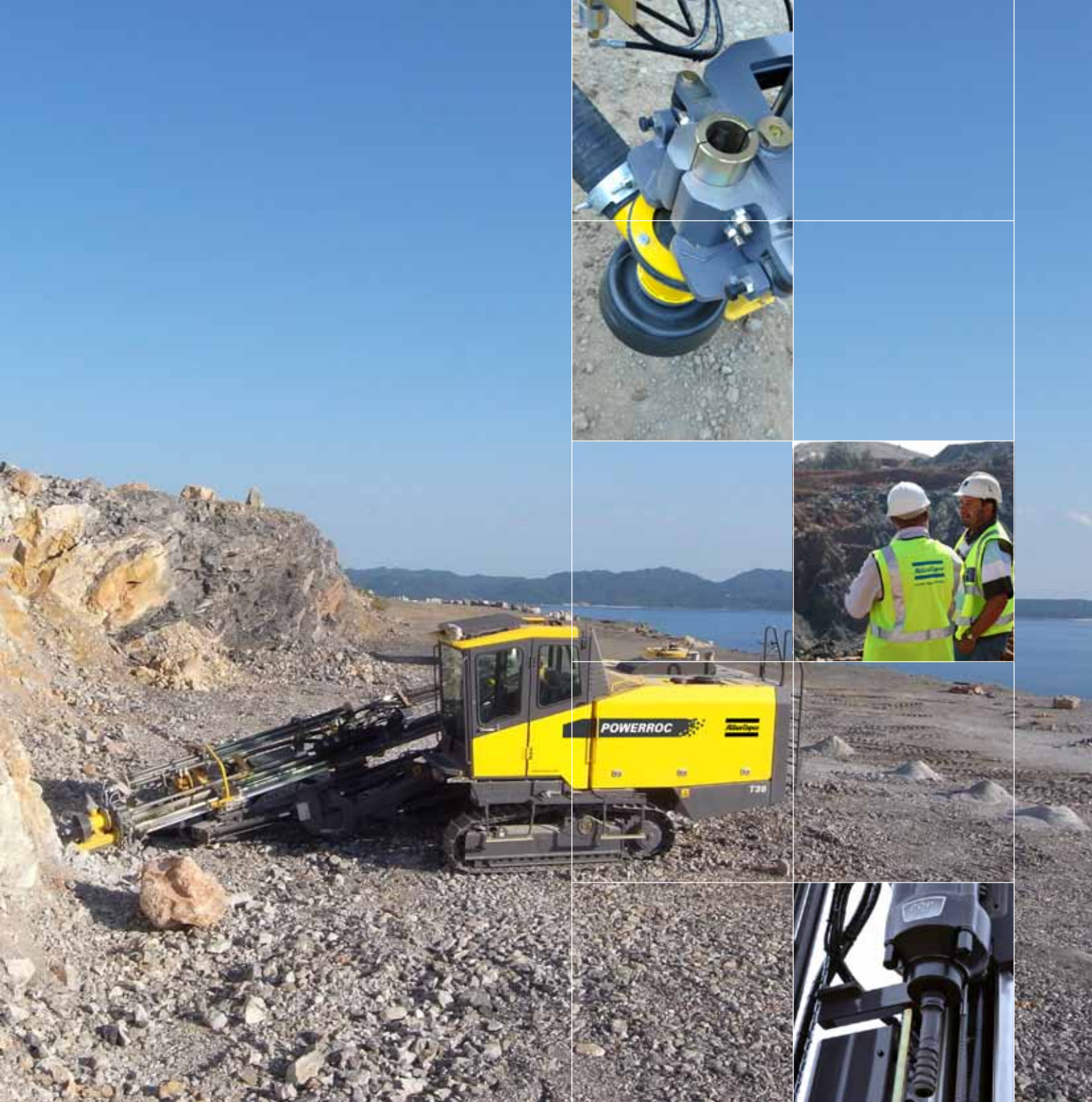
Low drill meters cost and easy to operate

Main benefits

- **Dependable feed system**, proven and productive COP 1240, 1640 or 1840 rock drill
- **Straightforward** and maintenance-friendly design
- **COP Logic** control system

The PowerROC series combines the straightforward design concept of our former CM line with the well-accepted features of the ROC family, in a new modular design developed for the next generation of Atlas Copco Surface Crawler Drill Rigs. All with one thing in mind: to help you make more profit.

The PowerROC T25, T30 and T35 are fuel efficient drill rigs equipped with a highly productive rock drill. Maintenance is simplified thanks to all around access to service points and good hose management with bulk heads.



Be productive

The well-proven COP rock drills provide high penetration rate. Continuous feeding by use of cylinder and rope, results in constant contact of the bit to the rock and leads to optimum transfer of the impact power. The COP logic drilling control system on PowerROC series adjusts drilling parameters in realtime depending to the rock condition and helps you resume drilling straight quality holes.

Be cost-efficient

The highly efficient rock drill gives you more drilling power for less input energy, resulting in less fuel consumption. Realtime adjustment on feed and impact pressure reduces

excessive energy and overtightening of the joints. The machines are built of modules and parts common to Atlas Copco Surface crawler portfolio. This makes training easy and parts stocking requirement reduced for customers with different Atlas Copco rig models.

Be sure of hole quality

With PowerROC T25, T30 and T35 you get great hole quality. The use of boom extension is very easy, fast and accurate for set up. The good visibility from the cabin in combination with the 3D inclination device reduces collaring errors and improves set up time.



Quick facts

Main Application:

Construction
Aggregate quarries
Limestone quarries

Drilling Method:

Top Hammer

Rock Drill Output Power:

COP 1240 12 kW (16.1 HP)
COP 1640 16 kW (21.5 HP)
COP 1840 18 kW (24.5 HP)

PowerROC T25

Rock Drill:
COP 1240

Drill steel:
R32, T38, T45

Maximum Hole Depth

21 m (69') Single boom

Engine

Cummins QSB 4.5

Free Air Delivery at 8.8 bar

83 l/s (176 cfm)

PowerROC T30

Rock Drill:
COP 1640

Drill steel:
T38, T45

Maximum Hole Depth

21 m (69') Single boom
25 m (82') Extendable boom

Engine

Cummins QSB 4.5

Free Air Delivery at 8.8 bar

95 l/s (201 cfm)

PowerROC T35

Rock Drill:
COP 1840

Drill steel:
T38, T45, T51

Maximum Hole Depth

25 m (82') Single/Extendable boom

Engine

Cummins QSB 6.7

Free Air Delivery at 9.7 bar

127 l/s (269 cfm)

Selection of options

Water Mist System

Stabilize hole walls with the Water Mist System - the perfect tool when drilling in poor rock formation. 150 litre (40 US Gal) pressurized water tank is connected directly to the flushing air.

Alignment control

The 3D hole inclination instrument located in the operator's cabin controls hole depth, improves set up time and reduces collaring errors. Increasing productivity.

Service agreements

To guarantee the optimal performance of your equipment, we offer ROC Care, ROC Care E and COP Care service agreements for less breakdowns and increased availability.

Atlas Copco

www.atlascopco.com