

**Atlas Copco** Surface drill rigs  
**FlexiROC T20 R**



**High productivity for small holes**

Hole Diameter: 38–64mm (1½"– 2½")

*Sustainable Productivity*

*Atlas Copco*

---

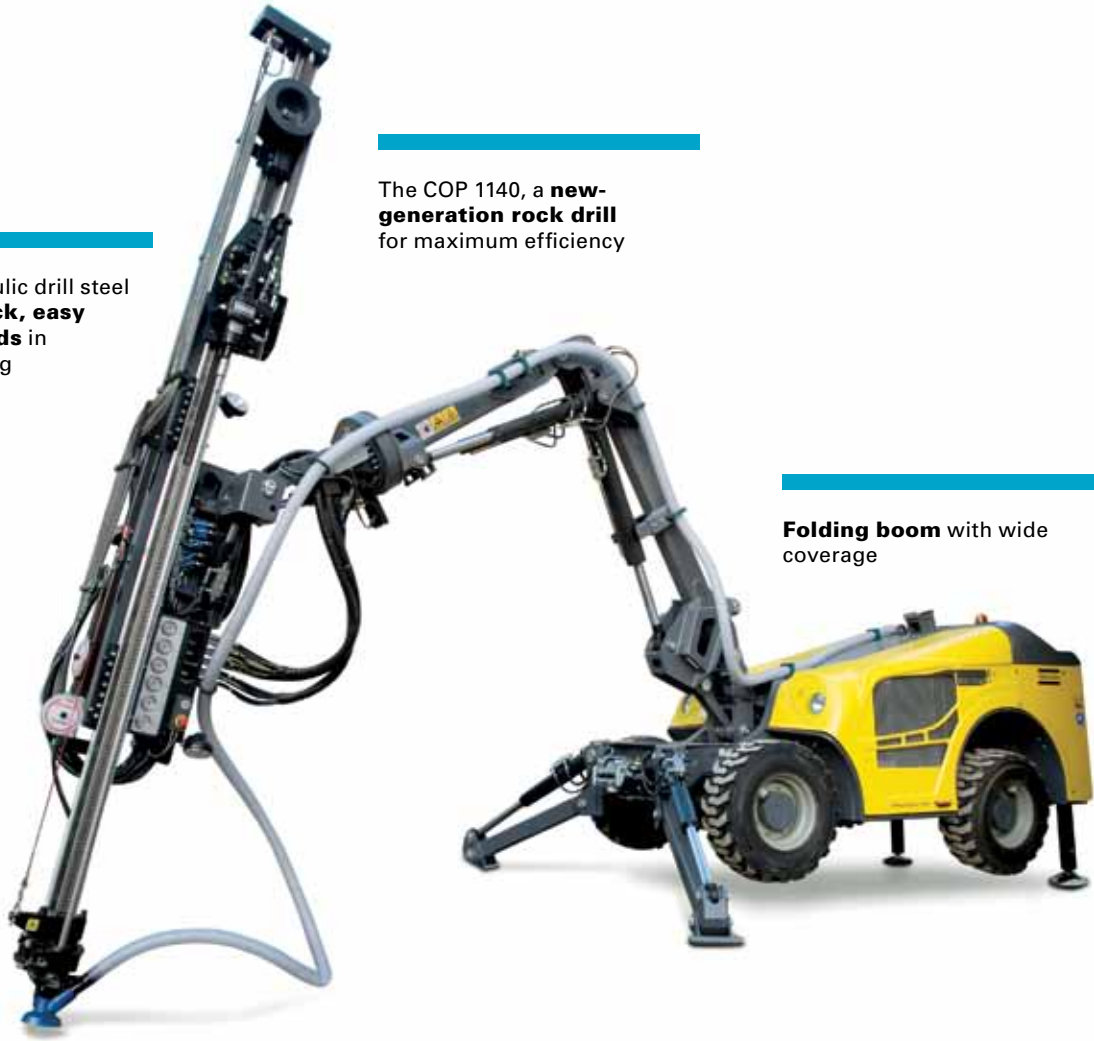
Standard hydraulic drill steel support for **quick, easy handling of rods** in extension drilling

---

The COP 1140, a **new-generation rock drill** for maximum efficiency

---

**Folding boom** with wide coverage



## Do great things in a small way

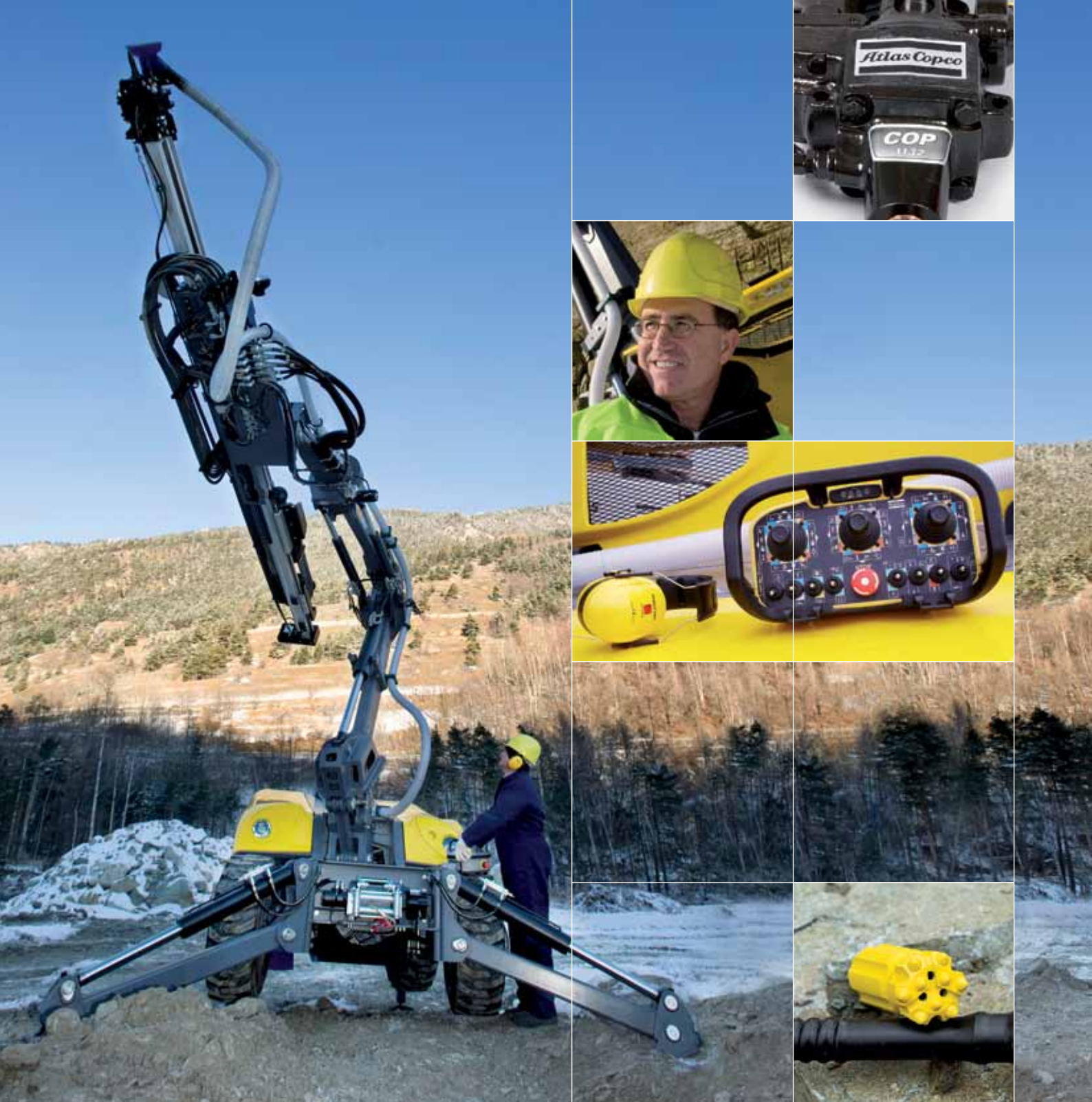
---

### Main benefits

- **High productivity** and low drill steel consumption thanks to the COP 1140 – Atlas Copco's highly efficient hydraulic rock drill with double dampening
- Can be equipped with the **Secoroc TC35 drill steel** for superior drilling performance
- **Large free air delivery** to optimally perform in demanding rock conditions

**The FlexiROC T20 R drill rig from Atlas Copco is a flexible and compact machine. With the FlexiROC T20 R, you can enjoy the lowest cost per meter drilled for your target hole size and maintain the same high productivity offered by much larger rigs. The compact size of the FlexiROC T20 R does not sacrifice performance, making it unique in its class.**

FlexiROC T20 R is ideal for relatively small construction jobs, trench drilling and rock reinforcement applications. It is available with direct control or full radio remote control. The wide coverage of the boom and the hydraulic rollover option give the rig the flexibility to tackle a wide variety of applications. The free air delivery specified on the rig ensures optimal drilling performance for your targeted hole size range.



### **The latest in bench drilling**

The new Secoroc TC35 bench drilling system represents the latest in small hole surface drilling. The TC35 drill steel, with a diameter of 39mm, offers straighter holes and superior drill steel economy.

### **A new-generation hydraulic rock drill**

To ensure a better penetration rate, more economical fuel consumption per drill meter and a lower cost of consumables, the FlexiROC T20 R relies on the COP 1140. The new generation hydraulic rock drill includes a double damping system and works with even greater efficiency than its predecessors.

### **Optimize your performance**

To guarantee the optimal performance of your equipment, we offer ROC Care, ROC Care E and COP Care service agreements that provide for regularly-scheduled service, optimized rig performance, inspector protocols, extended warranties (ROC Care and COP Care), discounts (ROC Care E), and satellite monitoring.

### **Superior performance and control**

The control panel available on the rig controls all drilling, tramping, boom and winch functions and also includes a cable extension that can be used as backup for radio remote control.



## Quick facts

### Main Application:

Construction

### Drilling Method:

Top Hammer

### Rock Drill:

COP 1140

### Rock Drill Output Power:

11kW (14,8 hp)

### Hole Diameter:

38 mm–64 mm (1 ½" – 2 ½")

### Maximum Hole Depth

with Manual Rod Handling:  
12m (39')

### Engine Power

Rating at 2400 rpm:

82kW (110HP)

### Free Air Delivery at 10 bar:

50l/s (106cfm)

## Selection of options

### Hydraulic Rollover Boom Head

The hydraulic rolover boom provides the wide coverage necessary in bolting and niche construction applications.

### Radio Remote Control

The ergonomic radio box gives you full control of tramming, drilling, boom and winch functions.

### Hydraulic Winch

The hydraulic winch is designed to make working conditions safer in extreme terrain, where it is necessary to anchor the rig to augment safe tramming.